

- NOTES
- 1 Observer
 - 2 Circle No 1
D1 = 8.7m
D2 = 9.6m
D3 = 9.8m
 3. Circle No 2.
D1 = 8.8m
D2 = 9.0m
D3 = 9.5m.
 4. Distance Fence to Circle = 12.9m
 5. Distance Circle to Circle = 1.6m
 6. Distance Circle to tree = 15.9m
 7. Distance circle to fence = 19.4m

MEASUREMENTS OF "Girdles"
FOUND AT MAITLAND - CAUSE: FUNGUS

OTHER RECENT REPORTS

Late April 1974

Captain and 3 crew members of a Boeing 707 approaching Perth, observed a bright light approx. 16 feet above the sea, which at first was motionless and was mistaken for one of the bouys used for navigation through the harbour entrance. The vessel passed the light at a distance of 40-45 yards. The light then moved off in a southerly direction and disappeared. The light was estimated to be 3-4 feet wide but was not detected on ship's radar, although the marker bouys were monitored. After completing the second leg of the manoeuvres and commencing the final run into port, the crew noticed a further five similar lights scattered over an area between the vessel and the town of Gladstone. Two of the lights flew rapidly away to the south, while the other 3 came directly towards the ship, taking up positions either side and directly astern of the vessel. The lights remained in this position for 4-5 minutes, again nothing appearing on ship's radar. The objects then departed disappearing in a southerly direction. No sound was detected throughout the sighting.

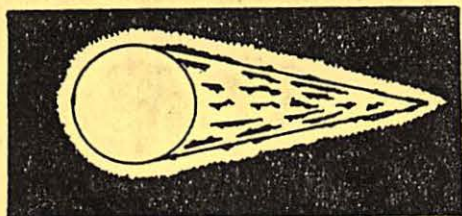
*Very strange
GET w/ radar
pickup*

from the direction of Perth. The object appeared to be on a parallel course, with an estimated closing speed 250 km/per hour). The object appeared as a circular cone shaped tail. The object was also observed prior to dawn in the lights of Perth 20-30 miles away. (Note: Precise details held at witnesses' request)

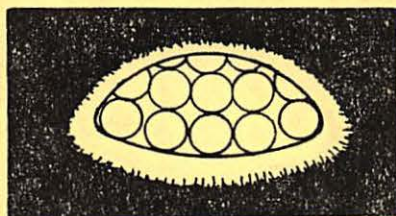
17.8.74

Captain and 2 crew members of a vessel entering Port Curtis, Gladstone, Qld. observed a light approx. 16 feet above the sea, which at first was motionless and was mistaken for one of the bouys used for navigation through the harbour entrance. The vessel passed the light at a distance of 40-45 yards. The light then moved off in a southerly direction and disappeared. The light was estimated to be 3-4 feet wide but was not detected on ship's radar, although the marker bouys were monitored. After completing the second leg of the manoeuvres and commencing the final run into port, the crew noticed a further five similar lights scattered over an area between the vessel and the town of Gladstone. Two of the lights flew rapidly away to the south, while the other 3 came directly towards the ship, taking up positions either side and directly astern of the vessel. The lights remained in this position for 4-5 minutes, again nothing appearing on ship's radar. The objects then departed disappearing in a southerly direction. No sound was detected throughout the sighting.

The objects were oval in shape, pale yellow in colour, with a tinge of green along the bottom. The light appeared to pulsate and appeared to be divided into sections, though the colour was uniform throughout.



Object seen by 707 crew near Perth, W.A.



One of six objects seen by ship's Captain and crew at Gladstone, Qld.

